

MONTHLY MEMBERSHIP PROGRESS REPORT

District 11 E2

Results as of: 3/31/2026

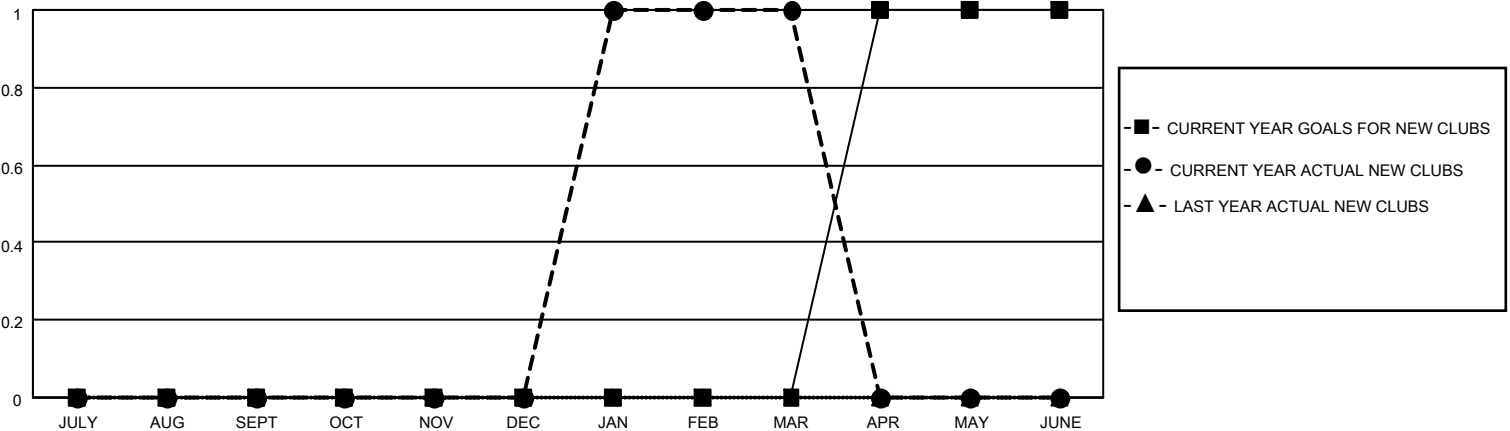
GMT:

LOCATION MICHIGAN

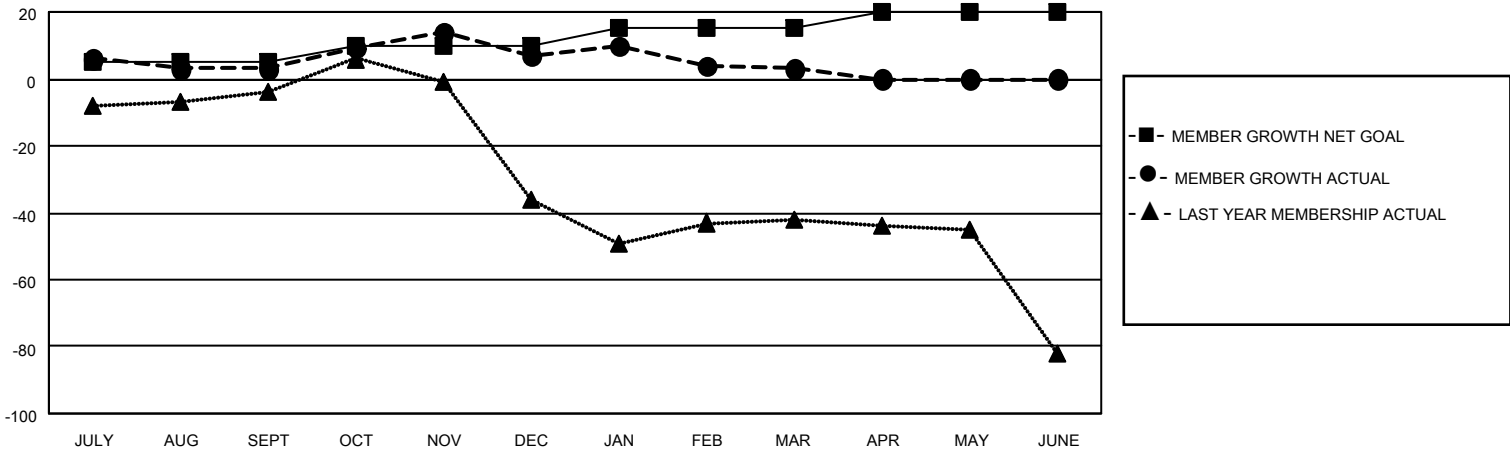
GMT CA

Clubs				Members			
RESULTS FOR 2025-2026				RESULTS FOR 2025-2026			
QUARTER	NEW CLUB GOAL	NEW CLUBS	DROPPED CLUBS	QUARTER	MEMBER GROWTH NET GOAL	MEMBER GROWTH ACTUAL	DROPPED MEMBERS ACTUAL (including transfers)
JULY/AUG/SEPT	0	0	0	JULY/AUG/SEPT	5	14	10
OCT/NOV/DEC	0	0	0	OCT/NOV/DEC	5	33	27
JAN/FEB/MAR	0	1	0	JAN/FEB/MAR	5	51	53
APR/MAY/JUNE	1	0	0	APR/MAY/JUNE	5	0	0

GOALS AND ACTUAL NEW CLUBS CUMULATIVE



GOALS AND ACTUAL MEMBERS CUMULATIVE



DROPPED CLUBS: 0	13 CLUBS OF 26 ADDED 1 OR MORE NEW MEMBERS	GENDER DISTRIBUTION MALE 430 (67.40%) FEMALE 208 (32.60%)
DROPPED MEMBERS DECEASED 14 CLUB CANCELLED 0 OTHER 76 TOTAL 90	CLICK HERE FOR CUMULATIVE MEMBERSHIP DATA	TOTAL FAMILY UNIT MEMBERS 121 FAMILY MEMBERS PAYING HALF DUES 61